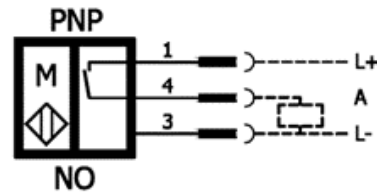
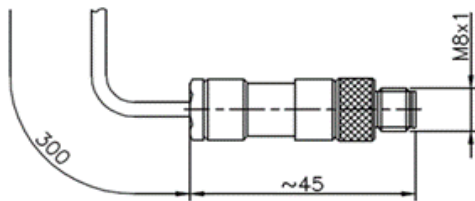
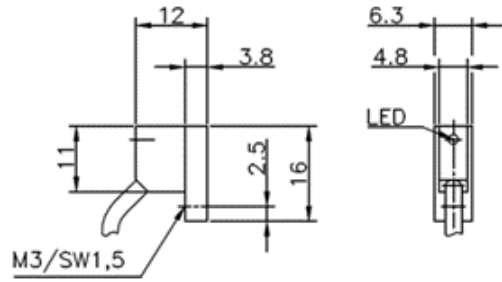


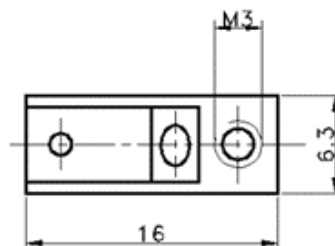
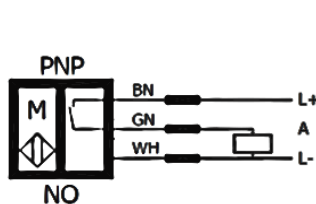
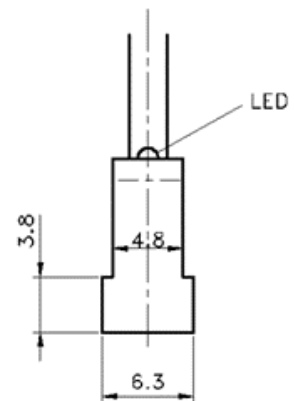
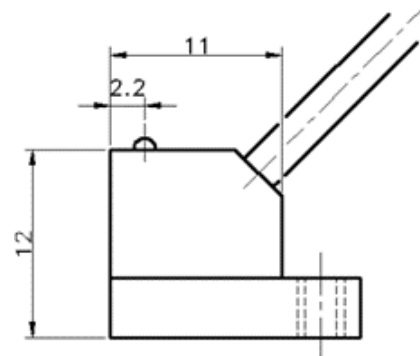
| Technical specifications | RSGU01-300-M8 |
|----------------------------------|---------------------------------------|
| DC 3-Wire | 16x12x6,3 mm |
| Switching output | PNP-closing contact |
| Operating voltage UB | 10 - 30V DC |
| Rated operational current Ie | max. 200 mA |
| Voltage drop Du | ≤3V (at I _{max} = 400mA) |
| Temperature range | - 25° C ... +80° C |
| Short-circuit strength | integrated |
| Inverse-polarity protection | integrated |
| Protection class DIN 60 5029 | IP67 |
| Switching status display | LED |
| Connection M8 | 0,3m PVC Wire: 3x0,04 mm ² |
| Housing material | Plastic material |
| Torque of fastening screw | 0.8 Nm |
| Operating temperature range [°C] | -30 to +120 |



Electronic magnetic switch

ZG-RSGU01-300-M8 for G-GP..., Signal transmitter with LED, with M8 plug

| Technical specifications | RSGU01 |
|----------------------------------|--------------------------------------|
| DC 3-Wire | 16x12x6,3 mm |
| Switching output | PNP-closing contact |
| Operating voltage UB | 10 - 30V DC |
| Rated operational current Ie | max. 200 mA |
| Voltage drop Du | ≤3V (at I _{max} = 400mA) |
| Temperature range | - 25° C ... +80° C |
| Short-circuit strength | integrated |
| Inverse-polarity protection | integrated |
| Protection class DIN 60 5029 | IP67 |
| Switching status display | LED |
| Connection M8 | 2 m PVC Wire: 3x0,04 mm ² |
| Housing material | Plastic material |
| Torque of fastening screw | 0.8 Nm |
| Operating temperature range [°C] | -30 to +120 |



Electronic magnetic switch

ZG-RSGU01 Magnetic proximity switch