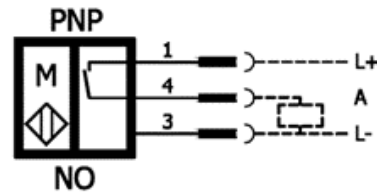
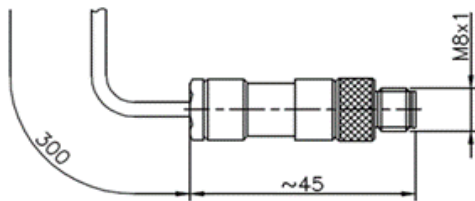
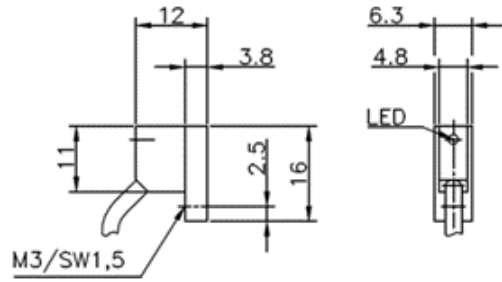


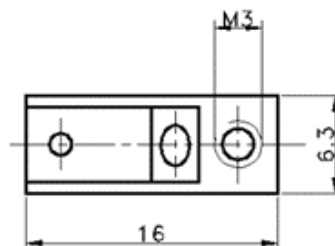
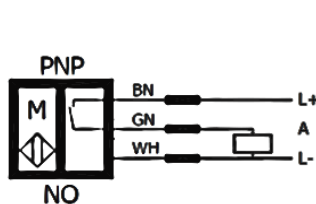
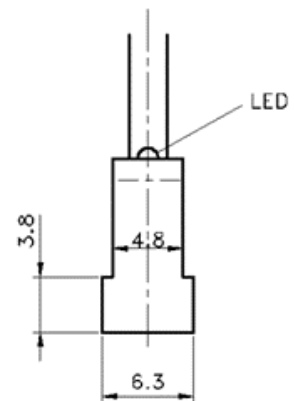
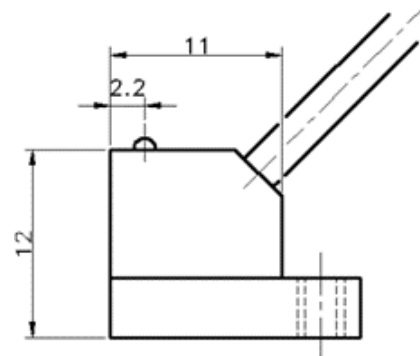
Technical specifications	RSGU01-300-M8
DC 3-Wire	16x12x6,3 mm
Switching output	PNP-closing contact
Operating voltage UB	10 - 30V DC
Rated operational current Ie	max. 200 mA
Voltage drop Du	≤3V (at I _{max} = 400mA)
Temperature range	- 25° C ... +80° C
Short-circuit strength	integrated
Inverse-polarity protection	integrated
Protection class DIN 60 5029	IP67
Switching status display	LED
Connection M8	0,3m PVC Wire: 3x0,04 mm ²
Housing material	Plastic material
Torque of fastening screw	0.8 Nm
Operating temperature range [°C]	-30 to +120



Electronic magnetic switch

ZG-RSGU01-300-M8 for G-GP..., Signal transmitter with LED, with M8 plug

Technical specifications	RSGU01
DC 3-Wire	16x12x6,3 mm
Switching output	PNP-closing contact
Operating voltage UB	10 - 30V DC
Rated operational current Ie	max. 200 mA
Voltage drop Du	≤3V (at I _{max} = 400mA)
Temperature range	- 25° C ... +80° C
Short-circuit strength	integrated
Inverse-polarity protection	integrated
Protection class DIN 60 5029	IP67
Switching status display	LED
Connection M8	2 m PVC Wire: 3x0,04 mm ²
Housing material	Plastic material
Torque of fastening screw	0.8 Nm
Operating temperature range [°C]	-30 to +120



Electronic magnetic switch

ZG-RSGU01 Magnetic proximity switch