

# G-GIS005

Technical specifications



### Operating mode:

The internal grippers dip into drillings, enlarge their external diameter by expansion of the silicone membrane, under pressure, and thus frictionally engaged hold to the bore wall. When pressure is switched off, the silicone membrane self-reliant retracts into the grippers inside due to its elastic behavior.

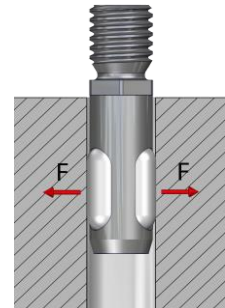
### Advantages:

- Minimum installation size possible
- Width across flats for assembly
- Minimum immersion depth
- Low gripper weight
- Simple gripper principle
- Cost-efficient
- Quick membrane replacement possible
- Indirect request via pressure switch in the supply line possible



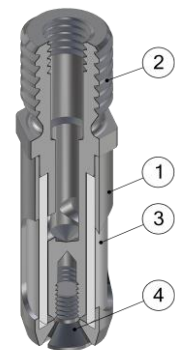
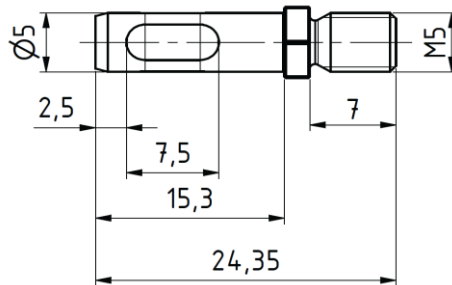
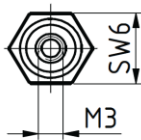
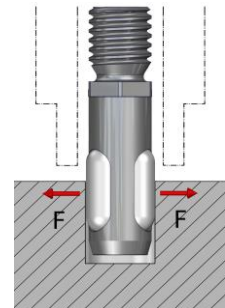
### Technical specifications

Technical specifications	GIS005
Working pressure [bar]	3 - 6
Grip force at 6 bar [N]	4
For bore diameter [mm]	5,1 – 6,0
Allowed component weight [kg]	0,4
Gripper weight [kg]	0.003
Compressed air connection Ø	M3
Assembly Ø	M5
Stroke cycles at ideal application conditions	500.000
Membrane material	Silicone rubber
Temperature range	-40° C to 300° C



### Limits of the application range

Minimum immersion depth of the membrane [%]	80
To protect the membrane from damage at low installation depth, use customers hull	DH = D <sub>GIS</sub> +10%
Reduced grip force, when the membrane is not completely covered	



### Internal gripper lowering Ø005...

G-GIS005 External diameter 5, screw thread M5

### Replacement tube

EG-GI005-S for internal gripper counter bore GIS005

Pos.	Description
1	Hull
2	Arbor
3	Tube
4	Counter sunk screw

# G-GIS006

Technical specifications



### Operating mode:

The internal grippers dip into drillings, enlarge their external diameter by expansion of the silicone membrane, under pressure, and thus frictionally engaged hold to the bore wall. When pressure is switched off, the silicone membrane self-reliant retracts into the grippers inside due to its elastic behavior.

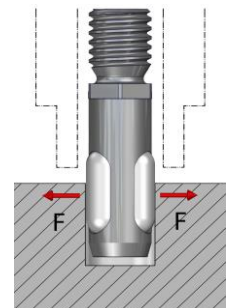
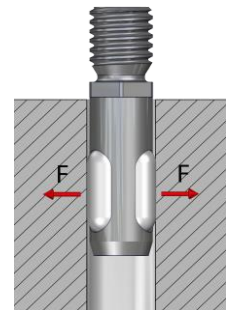
### Advantages:

- Minimum installation size possible
- Width across flats for assembly
- Minimum immersion depth
- Low gripper weight
- Simple gripper principle
- Cost-efficient
- Quick membrane replacement possible
- Indirect request via pressure switch in the supply line possible



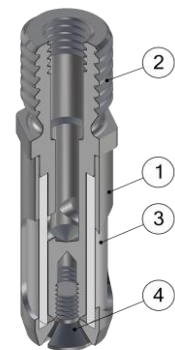
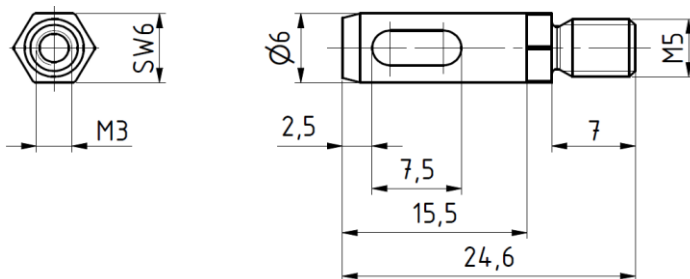
### Technical specifications

Technical specifications	GIS006
Working pressure [bar]	3 - 6
Grip force at 6 bar [N]	5
For bore diameter [mm]	6,1 – 7,0
Allowed component weight [kg]	0,5
Gripper weight [kg]	0.003
Compressed air connection Ø	M3
Assembly Ø	M5
Stroke cycles at ideal application conditions	500.000
Membrane material	Silicone rubber
Temperature range	-40° C to 300° C



### Limits of the application range

Minimum immersion depth of the membrane [%]	80
To protect the membrane from damage at low installation depth, use customers hull	DH = DGIS+10%
Reduced grip force, when the membrane is not completely covered	



### Internal gripper lowering Ø006...

G-GIS006 External diameter 6, screw thread M5

### Replacement tube

EG-GI006-S for internal gripper counter bore GIS006

Pos.	Description
1	Hull
2	Arbor
3	Tube
4	Counter sunk screw

# G-GIS007

Technical specifications



### Operating mode:

The internal grippers dip into drillings, enlarge their external diameter by expansion of the silicone membrane, under pressure, and thus frictionally engaged hold to the bore wall. When pressure is switched off, the silicone membrane self-reliant retracts into the grippers inside due to its elastic behavior.

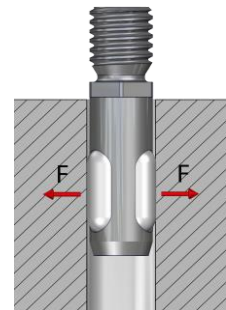
### Advantages:

- Minimum installation size possible
- Width across flats for assembly
- Minimum immersion depth
- Low gripper weight
- Simple gripper principle
- Cost-efficient
- Quick membrane replacement possible
- Indirect request via pressure switch in the supply line possible



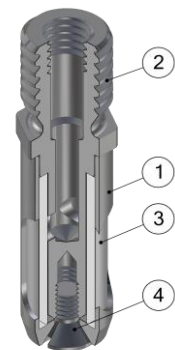
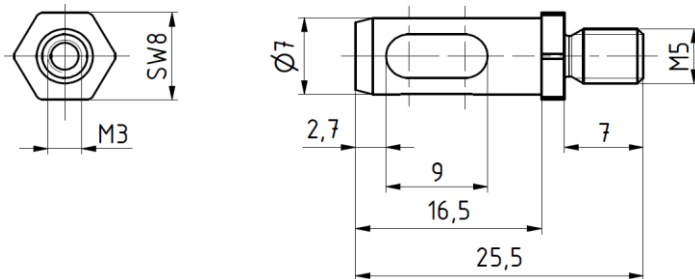
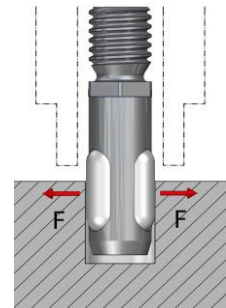
### Technical specifications

Technical specifications	GIS007
Working pressure [bar]	3 - 6
Grip force at 6 bar [N]	7
For bore diameter [mm]	7,1 – 8,0
Allowed component weight [kg]	0,7
Gripper weight [kg]	0.005
Compressed air connection Ø	M3
Assembly Ø	M5
Stroke cycles at ideal application conditions	500.000
Membrane material	Silicone rubber
Temperature range	-40° C to 300° C



### Limits of the application range

Minimum immersion depth of the membrane [%]	80
To protect the membrane from damage at low installation depth, use customers hull	DH = DGIS+10%
Reduced grip force, when the membrane is not completely covered	



### Internal gripper lowering Ø007...

G-GIS007 External diameter 7, screw thread M5

### Replacement tube

EG-GI007-S for internal gripper counter bore GIS007

Pos.	Description
1	Hull
2	Arbor
3	Tube
4	Counter sunk screw

# G-GIS008

Technical specifications



### Operating mode:

The internal grippers dip into drillings, enlarge their external diameter by expansion of the silicone membrane, under pressure, and thus frictionally engaged hold to the bore wall. When pressure is switched off, the silicone membrane self-reliant retracts into the grippers inside due to its elastic behavior.

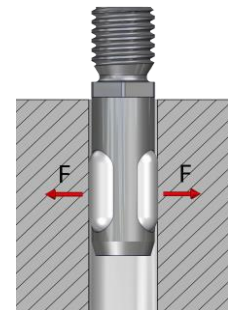
### Advantages:

- Minimum installation size possible
- Width across flats for assembly
- Minimum immersion depth
- Low gripper weight
- Simple gripper principle
- Cost-efficient
- Quick membrane replacement possible
- Indirect request via pressure switch in the supply line possible



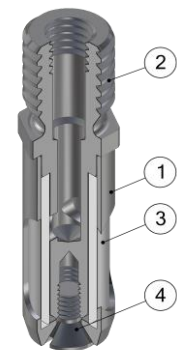
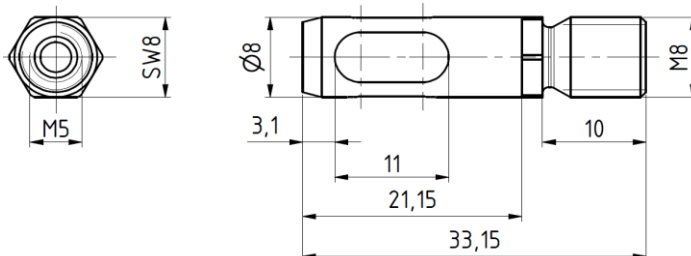
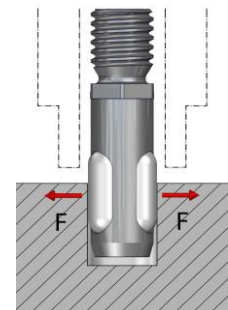
### Technical specifications

Technical specifications	GIS008
Working pressure [bar]	3 - 6
Grip force at 6 bar [N]	17
For bore diameter [mm]	8,1 – 9,0
Allowed component weight [kg]	1,7
Gripper weight [kg]	0.008
Compressed air connection Ø	M5
Assembly Ø	M8
Stroke cycles at ideal application conditions	500.000
Membrane material	Silicone rubber
Temperature range	-40° C to 300° C



### Limits of the application range

Minimum immersion depth of the membrane [%]	80
To protect the membrane from damage at low installation depth, use customers hull	DH = DGIS+10%
Reduced grip force, when the membrane is not completely covered	



### Internal gripper lowering Ø008...

G-GIS008 External diameter 8, screw thread M8

### Replacement tube

EG-GI008-S for internal gripper counter bore GIS008

Pos.	Description
1	Hull
2	Arbor
3	Tube
4	Counter sunk screw